



# Generative AI

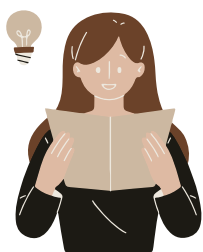
## A guide to acceptable use in study

Generative AI is a virtual tool that when used responsibly, can assist with your studies and in your role as an Early Childhood Educator.

To maximize the benefits and minimize the drawbacks, consider using AI as a tool to complement your learning rather than replace it. We encourage you to engage with the suggestions provided by AI but you must practice writing independently to develop and hone your skills.

### AI can help you to improve your...

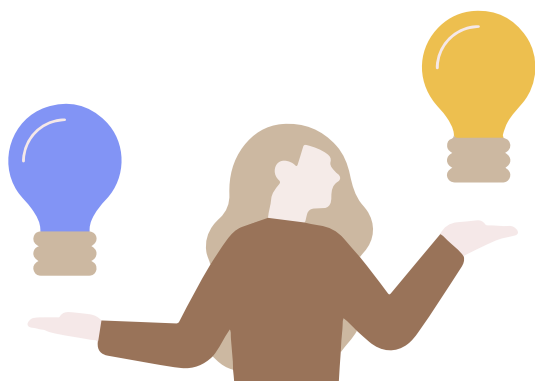
- ...understanding of key terms and knowledge areas
- ...experience ideas and adaptations on activities for different age groups and abilities
- ...responses by proof reading and providing editing suggestions and guidance.



Acceptable Use Generative AI can be used to...	Examples
Provide guidance to better understand a question.	Ask AI to break the question down into smaller more manageable parts.
Proof-read your response.	Ask AI to identify grammatical errors or review sentence structure and readability.
Explain a question or a specific term or theory.	"What does socio-cultural theory mean?" "What cognitive skills does a 3-year-old use while completing a puzzle?"
Inspire ideas for creating experiences.	"What experiences can I plan to support a 2-year-old in developing pro-social skills?"
Assist in writing interpretations.	Ask AI to identify the skills a child could use in a situation by reviewing an observation summary. Ensure no identifying details are included in the summary.

### When using generative AI you should...

- ...question the AI response provided.
- ...check the response aligns to the referenced resources provided such as the content in the textbook.
- ...only use it as a starting point, build, alter and modify so the information provided represents your own work.
- ...acknowledge AI use in your assessment responses, including which AI system you used.



### Accuracy Risks

The information AI generates is not always current. The answers provided are not always correct - it can provide a false answer known as a so-called 'hallucination.'

Identifying and checking the data or resources it has used can be difficult.

### How not to use AI/Chat GPT

Simply copying and pasting ICCC questions into an AI system and using AI to write your assessment responses will have a negative effect on your development and learning. This is an ineffective use of AI and will result in 'Not Satisfactory' assessment attempt. Below is a list of what you should avoid when using AI to support your learning.



Unacceptable Use Generative AI should not be used to....	Why is it inappropriate and ineffective?
<p>Asking AI to write assessment responses for you, i.e.</p> <p>Copying and pasting an assessment question without context</p>	<ul style="list-style-type: none"> <li>It leads to incorrect responses - AI is not drawing on the resources we have provided</li> <li>Many workplace assessment questions relate to specific practices of the service and students are required to reflect on these specific policies, procedures, and philosophy.</li> <li>Most answers to theory assessment questions can be found in the reading list or textbooks provided, which AI is unlikely to use as the main source of information.</li> </ul>
<p>Blindly trusting AI-generated information</p>	<ul style="list-style-type: none"> <li>Answers are not always accurate or up to date.</li> <li>AI responses may include 'AI cannot provide an appropriate response to this question'.</li> </ul>

Relying too much on AI for writing can potentially reduce your own critical thinking and problem-solving skills. It's important to balance AI assistance with your own efforts to ensure your brain remains actively engaged.

When you learn something, your brain creates new connections. These connections help you remember things, solve problems, and do innovative stuff!

As you practice what you have learned, those connections get stronger. Every time you learn something new, your brain gets a little smarter. So, keep exploring, learning, and growing! Just like muscles get stronger when you exercise, your brain gets sharper when you use it.



### Privacy Risks

Generative AI collects, stores and uses the data you provide it. This information can be shared with others - you should not share any information about yourself or the children, families or Educators that you work with.

**WARNING:** Using AI programs such as Chat GPT to answer your assessment tasks is a form of plagiarism. Committing or engaging in any dishonest or unfair act, including to plagiarise, collude, or cheat in any assessment event is a breach of ICCC's student code of conduct and may result in disciplinary action.

If you use AI in your assessment responses, you should save any draft responses AI provided as you may need to demonstrate that your assessment responses are your own thoughts and differ to those that have been solely provided by AI.